

EvergreenSM

for Business




People's Energy Cooperative

Your Touchstone Energy® Cooperative 

in partnership with our
wholesale power provider:



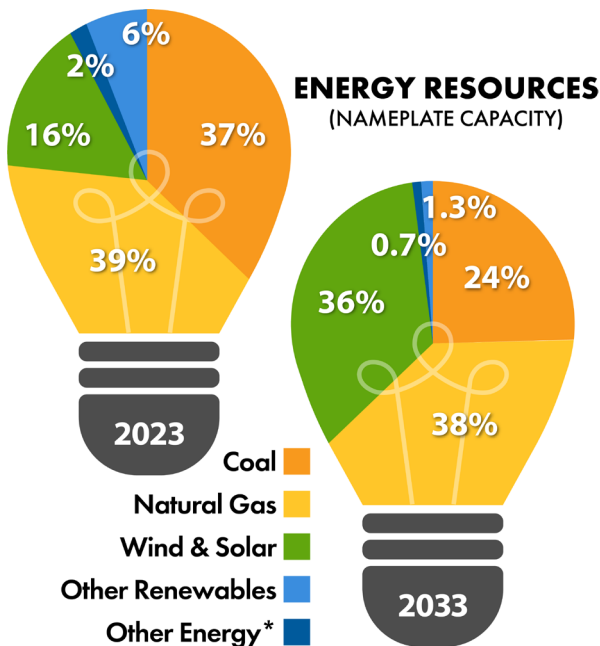
A Touchstone Energy® Cooperative 

Evergreen for Business is a voluntary green-power program available to electric cooperative member businesses and government entities within Dairyland Power Cooperative's four-state service territory.

Participation benefits are two-fold: Program participants meet their green energy or sustainability goals while also supporting increased opportunities for additional renewable energy generation sources. The renewable energy and affiliated renewable energy credits (RECs) that supplies **Evergreen for Business** is above and beyond government requirements.

Renewable Energy

Each **Evergreen** REC is generated within Dairyland Power Cooperative's service territory and tracked by Dairyland. Renewable energy comes from solar, wind, hydro and biogas generation resources via owned resources and power-purchase agreements. The generation mix of Dairyland's energy resources is displayed in the chart.



*Renewable technology without Renewable Energy Certificates (RECs)

Every megawatt-hour (1,000 kilowatt-hours) of electricity generated by a renewable resource creates one renewable energy credit (REC).

RECs are tracked separate from the electricity that is put on the regional grid. RECs are assigned to an electric cooperative member who wants the carbon emissions of their electricity use reduced or eliminated. This is becoming a common request among electric cooperative member businesses who have established sustainability goals.

Program Details

Members who use a minimum of 200 MWh annually (200,000 kWh or 16,667 kWh/month) can subscribe to **Evergreen for Business**.

Participants may also choose how much of their annual electricity use to offset - from 200 MWh per year up to 100 percent of their annual electricity use. Program participation is \$2.50 per MWh (REC) with a minimum annual commitment of 200 MWh (\$500). **This is in addition to your monthly electric bill.**

As an **Evergreen for Business** participant, you will be billed annually. The subscription fee per MWh is subject to change each year.

Benefits

Private ownership of renewable energy generation equipment can be limited by cost and location. **Evergreen** doesn't require upfront costs for equipment or future maintenance. It provides an option to be "green" without solar panels or wind turbines physically on the property.

For more details or to confirm if your account is eligible, contact us →

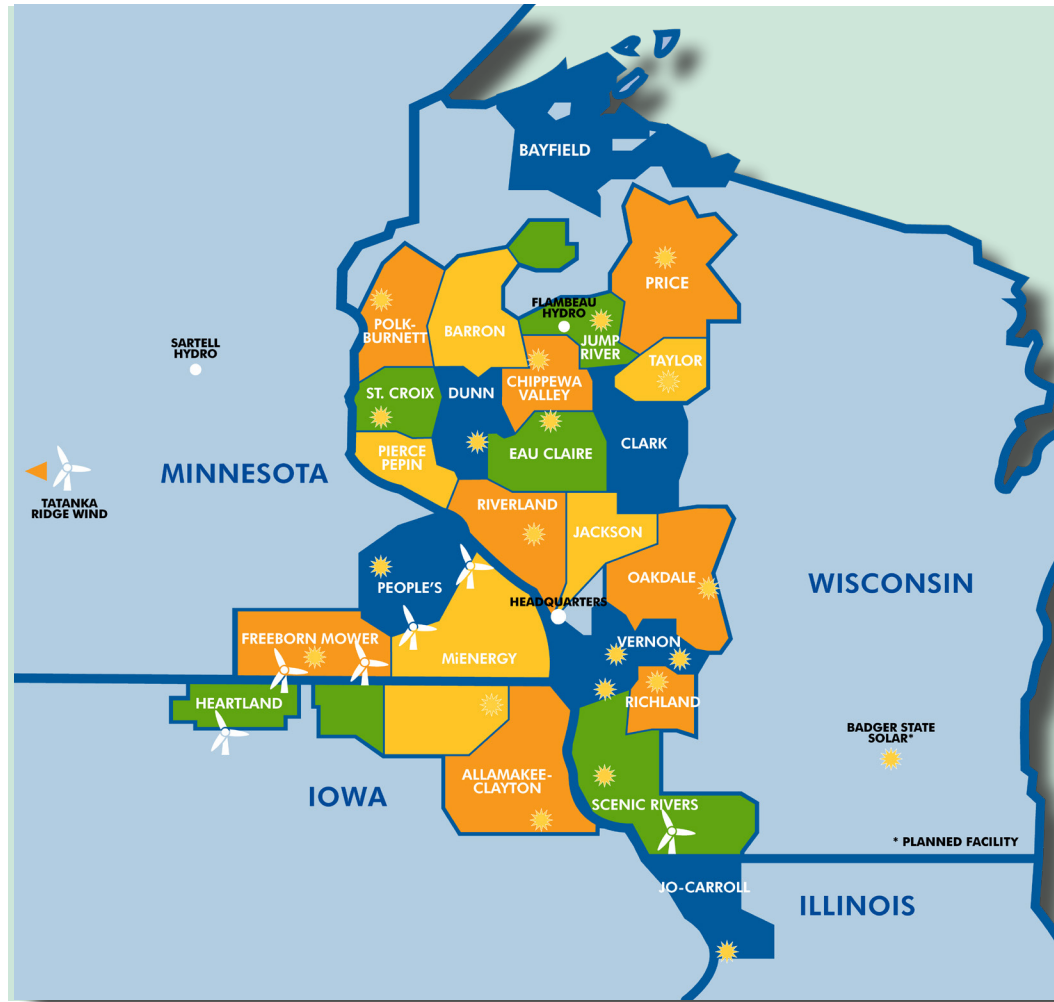
Did you know?

Dairyland supports pollinator habitat throughout its four-state service territory. These plots are located under solar arrays and surrounding substations.



Dairyland's own generation facilities and others within its service territory send the electricity generated onto the regional power grid. The actual electricity that serves your account may or may not directly come from renewable sources. However, your *Evergreen for Business* participation is above and beyond state requirements and will replace electricity that would have otherwise been generated by conventional fossil fuels.

Information is available, annually, if you would like to know which resource your RECs for the program came from the year prior.



MAP: A Touchstone Energy® Cooperative, Dairyland Power (La Crosse, Wis.) provides the wholesale electricity requirements for 24 distribution cooperatives and 27 municipal utilities. They, in turn, supply the energy needs of more than 700,000 people in Wisconsin, Minnesota, Iowa and Illinois. To learn more, visit DairylandPower.com.

For more information about *Evergreen for Business* and to confirm your business / account qualifies for the program, contact:



People's Energy Cooperative

Your Touchstone Energy® Cooperative 

(800) 214-2694 | memberservices@peoplesenergy.coop